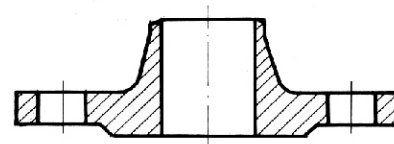
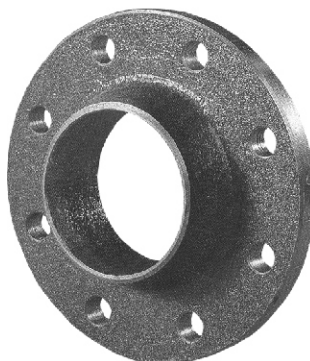


# STEEL NECK FLANGE

## ACC TO BDS 3281 - 84

DN	10 - 400
PN	100 bar
T max	300°C



**Application:**

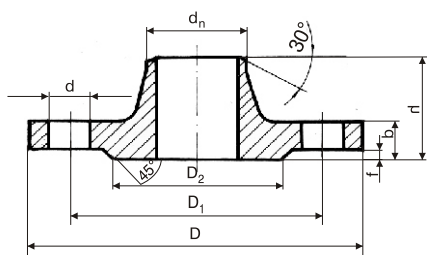
As a bond between pipe systems and armature.

**Materials:**

parts	acc to DIN	Ws. №
Body	C 35	1.0501

**Size (mm):**

D <sub>y</sub>	d <sub>n</sub>	D	D <sub>1</sub>	D <sub>2</sub>	b	f	h	n	d	weight kg
10	15	100	70	42	18	2	43	4	14	1.03
15	19	105	75	47	20	2	46	4	14	1.27
20	26	130	90	58	22	2	51	4	18	1.97
25	33	140	100	68	24	2	56	4	18	2.50
32	39	155	110	78	24	2	60	4	22	3.06
40	46	170	125	88	26	3	67	4	22	4.05
50	58	195	145	102	28	3	68	4	26	6.08
65	77	220	170	122	32	3	80	8	26	8.57
80	90	230	180	133	34	3	87	8	26	9.97
100	110	265	210	158	38	3	97	8	30	14.78
125	135	315	250	184	42	3	112	8	33	23.34
150	161	355	290	212	46	3	125	12	33	32.19
200	222	430	360	285	54	3	140	12	36	54.23
250	278	505	430	345	60	3	160	12	39	85.68
300	330	585	500	410	70	4	180	16	42	128.69
350	382	655	560	465	76	4	195	16	48	171.84
400	432	715	620	535	80	4	200	16	48	203.26



n = number of holes