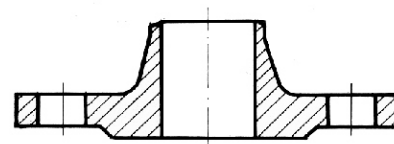
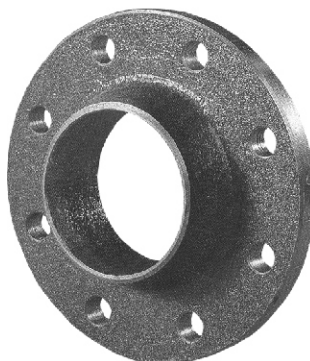


STEEL NECK FLANGE

ACC TO BDS 3281 - 84

DN	10 - 400
PN	63 bar
T max	300°C



Application:

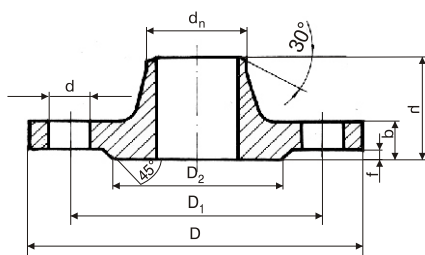
As a bond between pipe systems and armature.

Materials:

parts	acc to DIN	Ws. №
Body	C 35	1.0501

Size (mm):

D _y	d _n	D	D ₁	D ₂	b	f	h	n	d	weight kg
10	15	100	70	42	18	2	46	4	14	1.03
15	19	105	75	47	18	2	46	4	14	1.15
20	26	130	90	58	20	2	54	4	18	1.80
25	33	140	100	68	22	2	56	4	18	2.30
32	39	155	110	78	23	2	60	4	22	2.94
40	46	170	125	88	24	3	65	4	22	3.75
50	58	180	135	102	26	3	67	4	22	4.63
65	77	205	160	122	28	3	72	8	22	6.29
80	90	215	170	133	30	3	72	8	22	7.22
100	110	250	200	158	32	3	77	8	26	10.71
125	135	295	240	184	36	3	95	8	30	17.13
150	161	345	280	212	38	3	105	8	33	24.60
200	222	415	345	285	44	3	110	12	36	36.60
250	278	470	400	345	48	3	115	12	36	50.89
300	330	530	460	410	54	4	120	16	36	68.15
350	382	600	525	465	60	4	140	16	39	98.68
400	432	670	585	535	66	4	155	16	42	135.80



n = number of holes