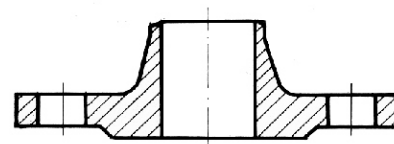
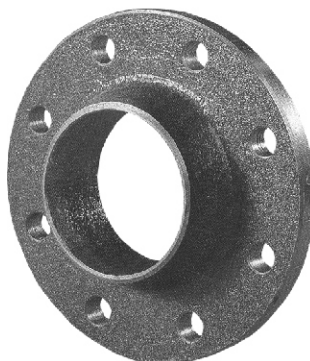


STEEL NECK FLANGE

ACC TO BDS 3281 - 84

DN	10 - 500
PN	40 bar
T max	300°C

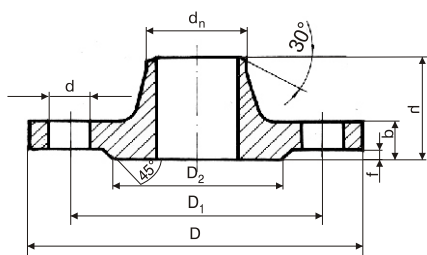


Application: As a bond between pipe systems and armature.

Materials:	parts	acc to DIN	Ws. №
	Body	C 22	1.0402

Size (mm):

D _y	d _n	D	D ₁	D ₂	b	f	h	n	d	weight kg
10	15	90	60	42	14	2	35	4	14	0.68
15	19	95	65	47	14	2	35	4	14	0.79
20	26	105	75	58	14	2	36	4	14	0.97
25	33	115	85	68	14	2	38	4	14	1.18
32	39	140	100	78	16	2	45	4	18	1.82
40	46	150	110	88	16	3	48	4	18	2.19
50	58	165	125	102	17	3	48	4	18	2.81
65	77	185	145	122	19	3	53	8	18	3.71
80	90	200	160	133	23	3	58	8	18	4.80
100	110	235	190	158	23	3	68	8	22	7.40
125	135	270	220	184	25	3	68	8	26	10.0
150	161	300	250	212	27	3	71	8	26	13.03
200	222	375	320	285	35	3	88	12	30	24.44
250	278	450	385	345	39	3	101	12	33	37.59
300	330	515	450	410	42	4	116	16	33	53.10
350	382	580	510	465	48	4	120	16	36	70.84
400	432	660	585	535	54	4	139	16	39	106.76
500	536	755	670	615	58	4	139	20	42	132.33



n = number of holes