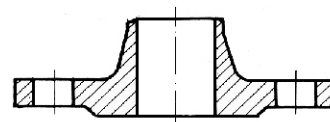
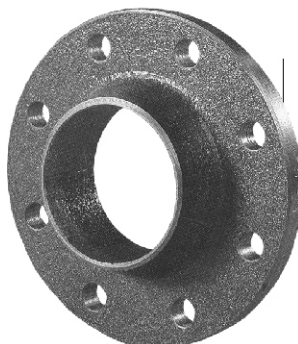


# STEEL NECK FLANGE

ACC TO BDS 3281 - 84

DN	10 - 600
PN	16 bar
T max	300°C



**Application:**

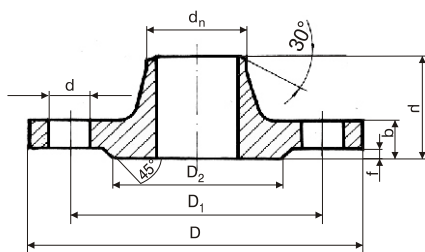
As a bond between pipe systems and armature.

**Materials:**

parts	acc to DIN	Ws. №
Body	C 22	1.0402

**Size (mm):**

D <sub>y</sub>	d <sub>n</sub>	D	D <sub>1</sub>	D <sub>2</sub>	b	f	h	n	d	weight kg
10	15	90	60	42	12	2	35	4	14	0.605
15	19	95	65	47	12	2	35	4	14	0.691
20	26	105	75	58	12	2	38	4	14	0.878
25	33	115	85	68	13	2	40	4	18	1.060
32	39	140	100	78	13	2	42	4	18	1.62
40	46	150	110	88	13	3	45	4	18	1.87
50	58	165	125	102	13	3	48	4	18	2.41
65	77	185	145	122	15	3	50	4	18	3.28
80	90	200	160	133	17	3	53	4	18	4.22
100	110	220	180	158	17	3	53	8	18	5.03
125	135	250	210	184	19	3	60	8	18	6.81
150	161	285	240	212	19	3	60	8	22	8.25
200	222	340	295	268	21	3	61	12	22	11.79
250	278	405	355	320	23	3	68	12	26	17.36
300	330	460	410	370	24	4	70	12	26	22.75
350	382	520	470	430	28	4	74	16	26	32.04
400	432	580	525	482	32	4	79	16	30	42.80
500	536	715	650	585	38	4	94	20	33	70.97
600	636	840	770	685	41	5	95	20	36	90.40



n = number of holes