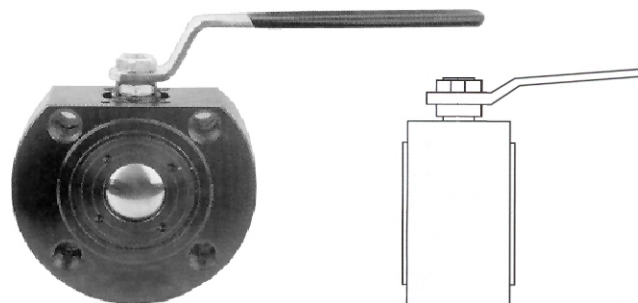


STEEL BALL VALVE FOR NATURAL GAS

**FACE TO FACE ACC TO
DIN 3202 - F 1**

DN	15 - 100
PN	40 bar
T max	180°C



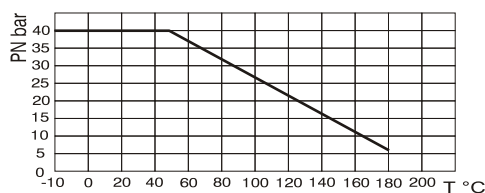
Application:

For pipe systems transporting natural gas.

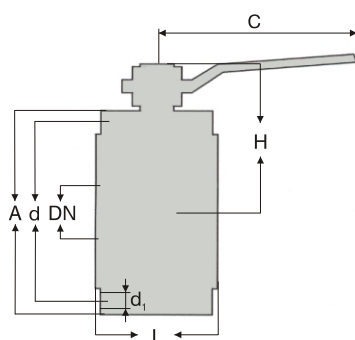
Materials:

parts	acc to DIN	Ws. №
Body	C22.8	1.0460
Ball DN 15 ÷ 32	X5CrNi18 10	1.4301
DN 40 ÷ 100	X5CrNiMo17 12 2	1.4401
Pivot	X5CrNi18 10	1.4301
Sealing	PTFE NBR VITON	

Tmax / PN:



Size (mm):



DN	L	H	A	d	C	n x d ₁	kg
15	35	65	90	65	140	4 x M12	1.4
20	38	70	100	75	140	4 x M12	1.8
25	43	82	110	85	180	4 x M12	2.5
32	54	85	130	100	180	4 x M16	4.4
40	66	102	140	110	230	4 x M16	6.2
50	83	110	150	125	230	4 x M16	8.6
65	103	138	175	145	320	8 x M16	15.9
80	122	150	190	160	320	8 x M16	20.6
100	153	173	235	190	370	8 x M20	39.5