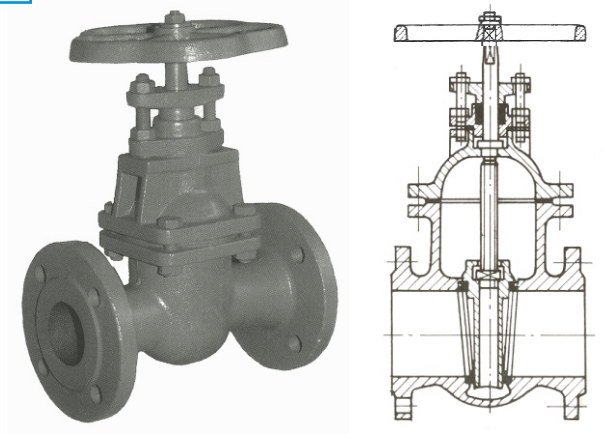


CAST IRON GATE VALVE

**FACE TO FACE ACC TO BDS 1628 - 89
PLUNGED MANDREL**

DN	40	50 - 200
PN	10 bar	16 bar
T max	200°C	200°C

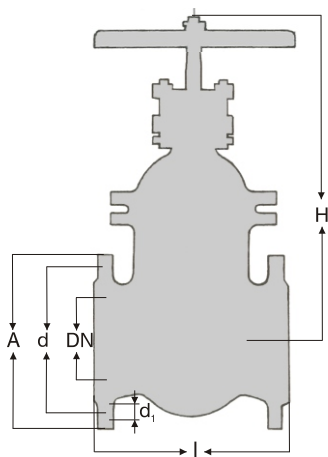


Application: As a closing valves in the industrial pipe systems for steam, water and non aggressive fluids.

Materials:	parts	acc to DIN	Ws. №
	Body and bonnet	GG 25	0.6025
	Mandrel	St 37 - 2	1.0037
	Cotter	GG 25	0.6025
	Seal packing	non asbestos	

Note: The valve is offered with flanges acc. to PN 10, PN 16 (as it is shown at the table).

Size (mm):



DN	PN	L	H	A	d	n x d ₁	kg
40	10	170	258	150	110	4 x 18	13
50	16	250	262	165	125	4 x 18	14
65		270	300	185	145	4 x 18	21
80		280	322	200	160	8 x 18	25
100		300	405	220	180	8 x 18	41
125		325	410	250	210	8 x 18	53
150		350	455	285	240	8 x 22	69
200		400	535	340	295	12 x 22	125